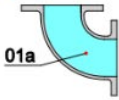


## Materials of construction

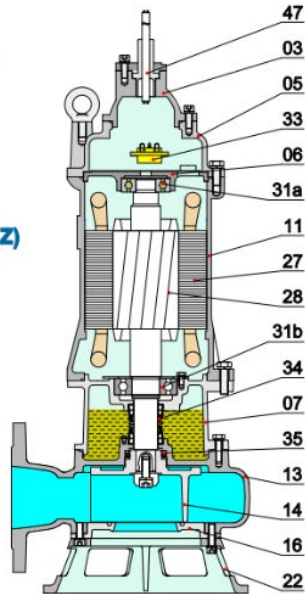
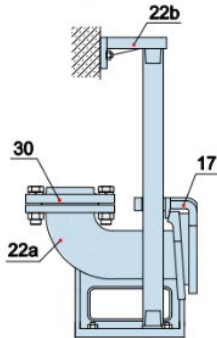
### Movable Soft Pipe Installation (R)



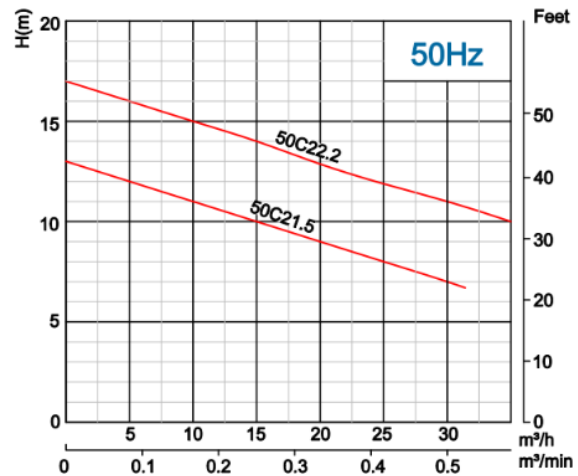
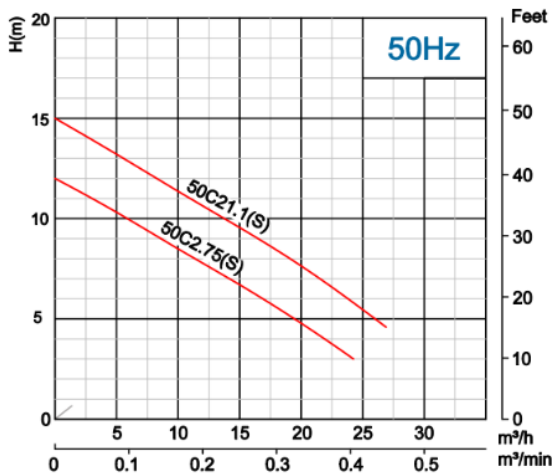
### Hard Pipe Installation (Y)



### Auto-coupled Installation (Z)

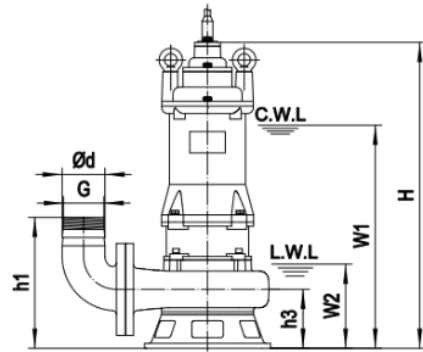
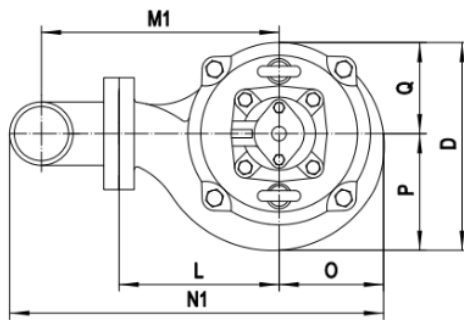


Item No.	Part name	Material
01	Hose coupling	Cast iron
01a	Hose coupling	Cast iron
03	Terminal box	Cast iron
05	Upper cover	Cast iron
06	Up-Bearing house	Cast iron
07	Bearing house	Cast iron
11	Motor body	Cast iron
13	Pump body	Cast iron
14	Impeller	Cast iron
16	Inlet plate	Cast iron
17	Coupling adapter	Cast iron
22	Seat assembly	Cast iron
22a	Coupling seat	Cast iron
22b	Upper guide support	Cast iron
27	Stator	
28	Rotor	Shaft : AISI304SS
30	Flange	Cast iron
31a	Bearing	Ball bearing
31b	Bearing	Ball bearing
33	Motor protector	
34	Mechanical seal	Sic-Sic/Carbon-Ceramic
35	Oil seal	
47	Cable	

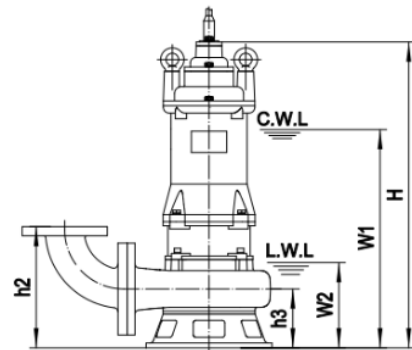
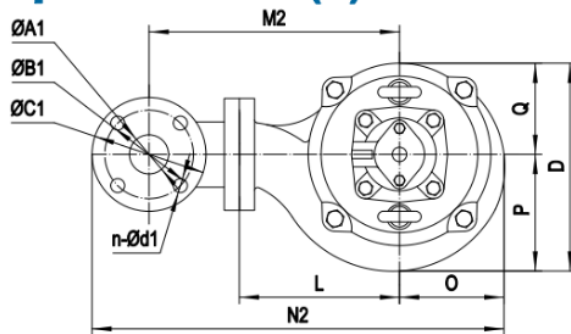


Model	Voltage	Current	Motor power		Outlet		Rated capacity	Rated head	Max capacity	Max Head	Impeller Passage	Cable
	V	A	kW	HP	in	mm	m³/h	m	m³/h	m	mm	mm²
50C2.75	380	2	0.75	1	2	50	10	8	24	12	20	4G1.0
50C2.75S	220	5.2	0.75	1	2	50	10	8	24	12	20	3G1.0
50C21.1	380	2.8	1.1	1.5	2	50	15	9	27	15	20	4G1.0

## Movable Soft Pipe Installation (R)



## Hard Pipe Installation(Y)



C.W.L : Continuous running water level  
L.W.L : Lowest running water level

## Dimensions table

Model	Ød	G	ØA1	ØB1	ØC1	n-Ød1	h1	h2	h3	W1	W2	H	O	P	Q	L	D	M1	M2	N1	N2
50C2.75	50	G1½"	50	110	140	4-Ø14	202	197	97	350	140	497	100	100	100	128	200	194	230	320	400
50C2.75S	50	G1½"	50	110	140	4-Ø14	202	197	97	350	140	497	100	100	100	128	200	194	230	320	400

## Weights & Packing dimensions

Model	R			Y		
	N.W	G.W	Packing dimension	N.W	G.W	Packing dimension
	kg	kg	mm	kg	kg	mm
50C2.75	26	27.5	520×245×250	28	29.5	520×255×310
50C2.75S	26.5	28	520×245×250	28.5	30	520×255×310

